

Policy Approaches to Reducing Health Inequalities

Canadian Public Health Association Conference, Toronto

Workshop | June 2016

Val Morrison & Pascale Mantoura
National Collaborating Centre
for Healthy Public Policy

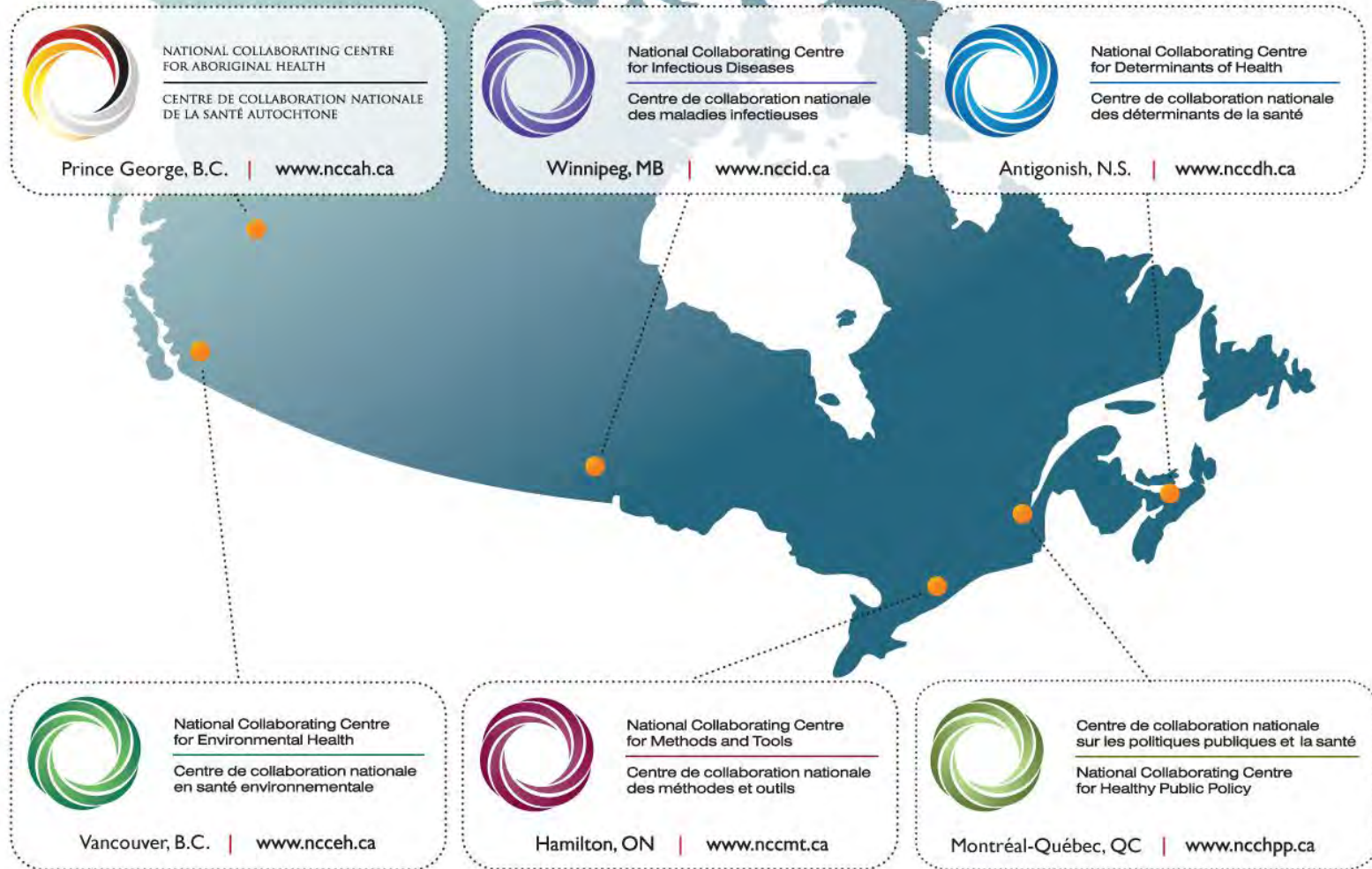


Centre de collaboration nationale
sur les politiques publiques et la santé
National Collaborating Centre
for Healthy Public Policy

*Institut national
de santé publique*

Québec

The National Collaborating Centres for Public Health



National Collaborating Centre for Healthy Public Policy (NCCCHPP)

Our mandate

- Support public health actors in their efforts to promote healthy public policies

Our areas of expertise

- The effects of public policies on health
- Generating and using knowledge about policies
- Intersectoral actors and mechanisms
- Strategies to influence policy making



Centre de collaboration nationale
sur les politiques publiques et la santé
National Collaborating Centre
for Healthy Public Policy

*Institut national
de santé publique*
Québec 

Workshop outline

- Part 1: The social determinants of health and of health inequalities
- Part 2: Eight policy approaches to reducing health inequalities
- Part 3: The practical implications of different policy approaches



Health Inequalities

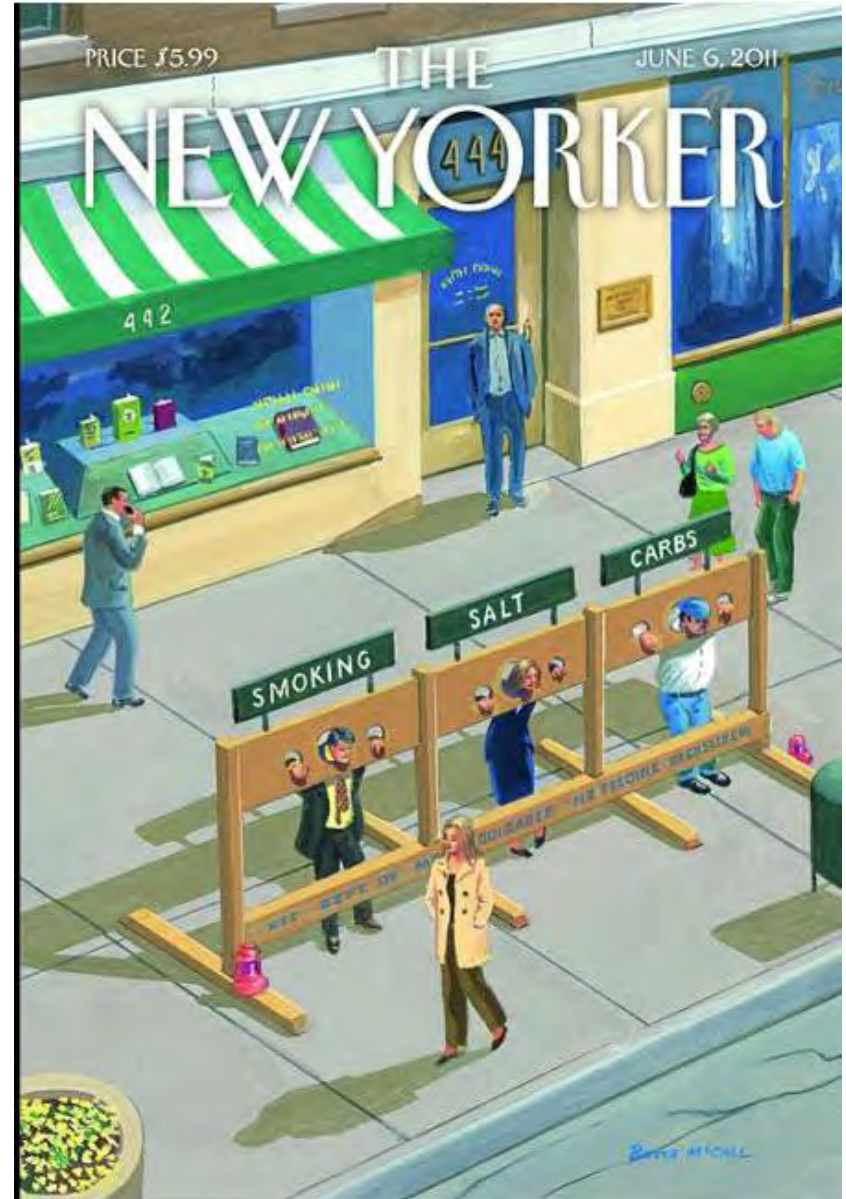
“Differences in health status experienced by various individuals or groups in society. These can be the result of genetic and biological factors, choices made or by chance, but often they are because of unequal access to key factors that influence health like income, education, employment and social supports”

(Government of Canada, 2008, p. 5)

Lifestyle drift

Recognize the need to act on the more structural determinants of health inequalities but develop interventions targeting individual and behavioural determinants of health.

(Mantoura & Morrison, 2016; Baum & Fisher, 2014)



(The New Yorker, June 6, 2011)

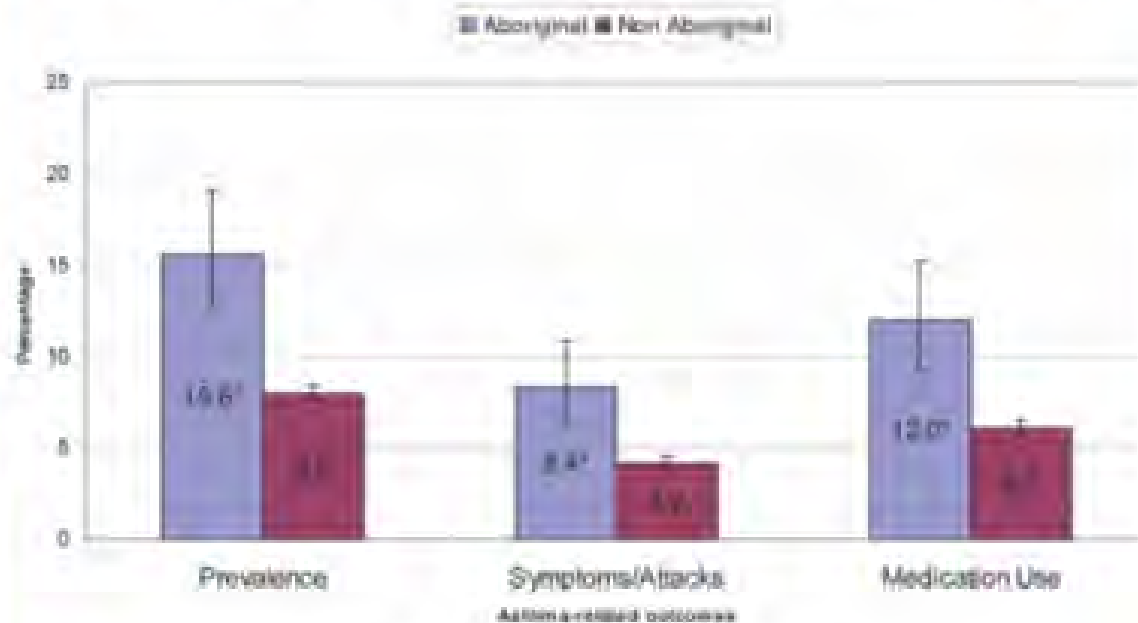
Health inequalities

- Focus on:
 - Disadvantages
 - Gaps
 - Gradient

(Graham, 2004a)

Health inequalities in Canada

Figure 11: Asthma Burden by Aboriginal Status, Ontario, 2007-08

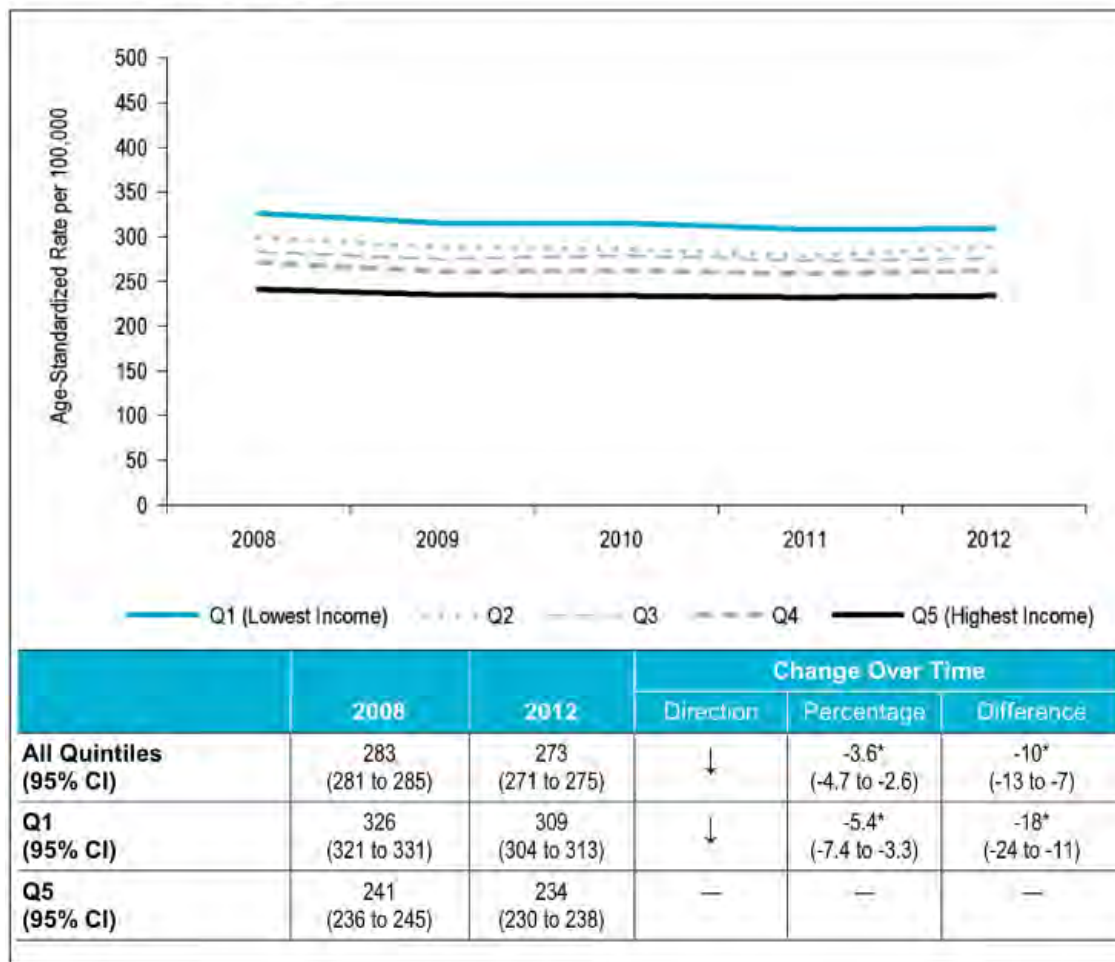


Notes: *statistically significantly higher

Source: Canadian Community Health Survey, Statistics Canada, Share File, Ontario MOHLTC

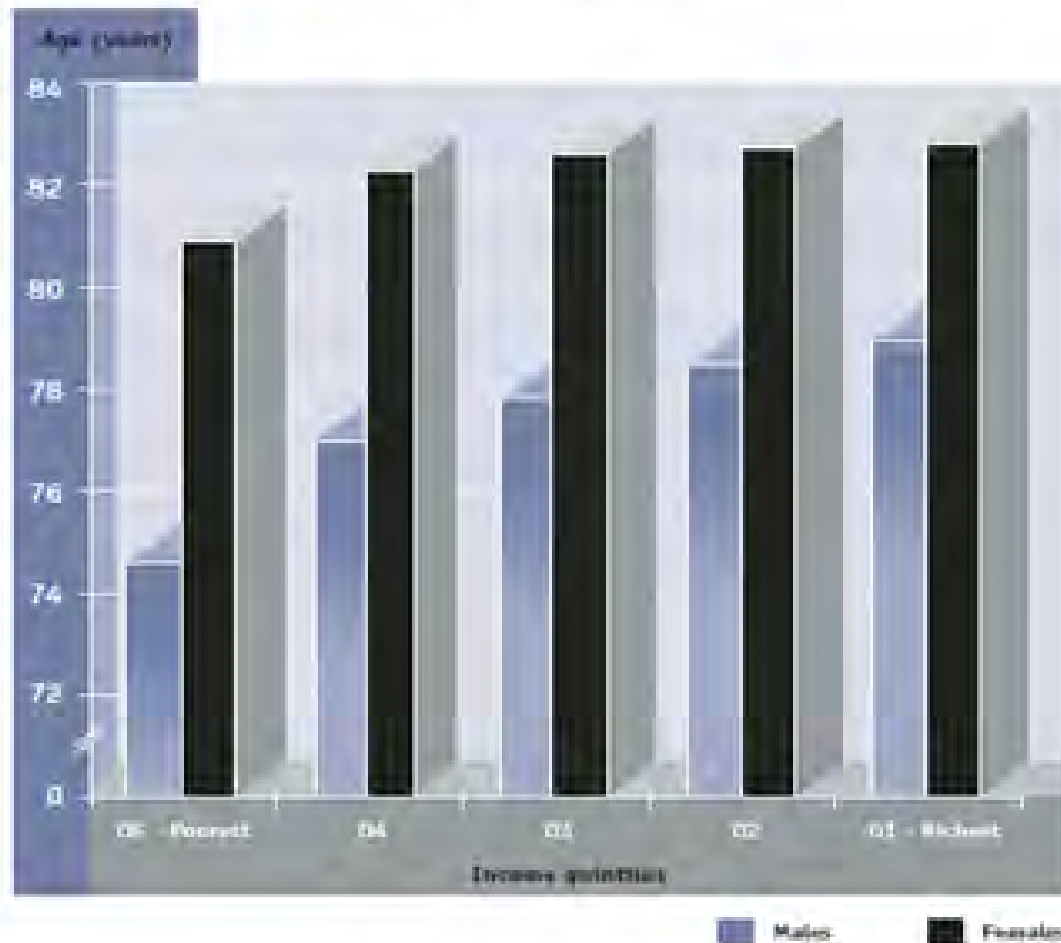
Health inequalities in Canada

Figure 73: Hospitalized Heart Attacks Rates, by Income Quintile, Canada, 2008 to 2012



Health inequalities in Canada

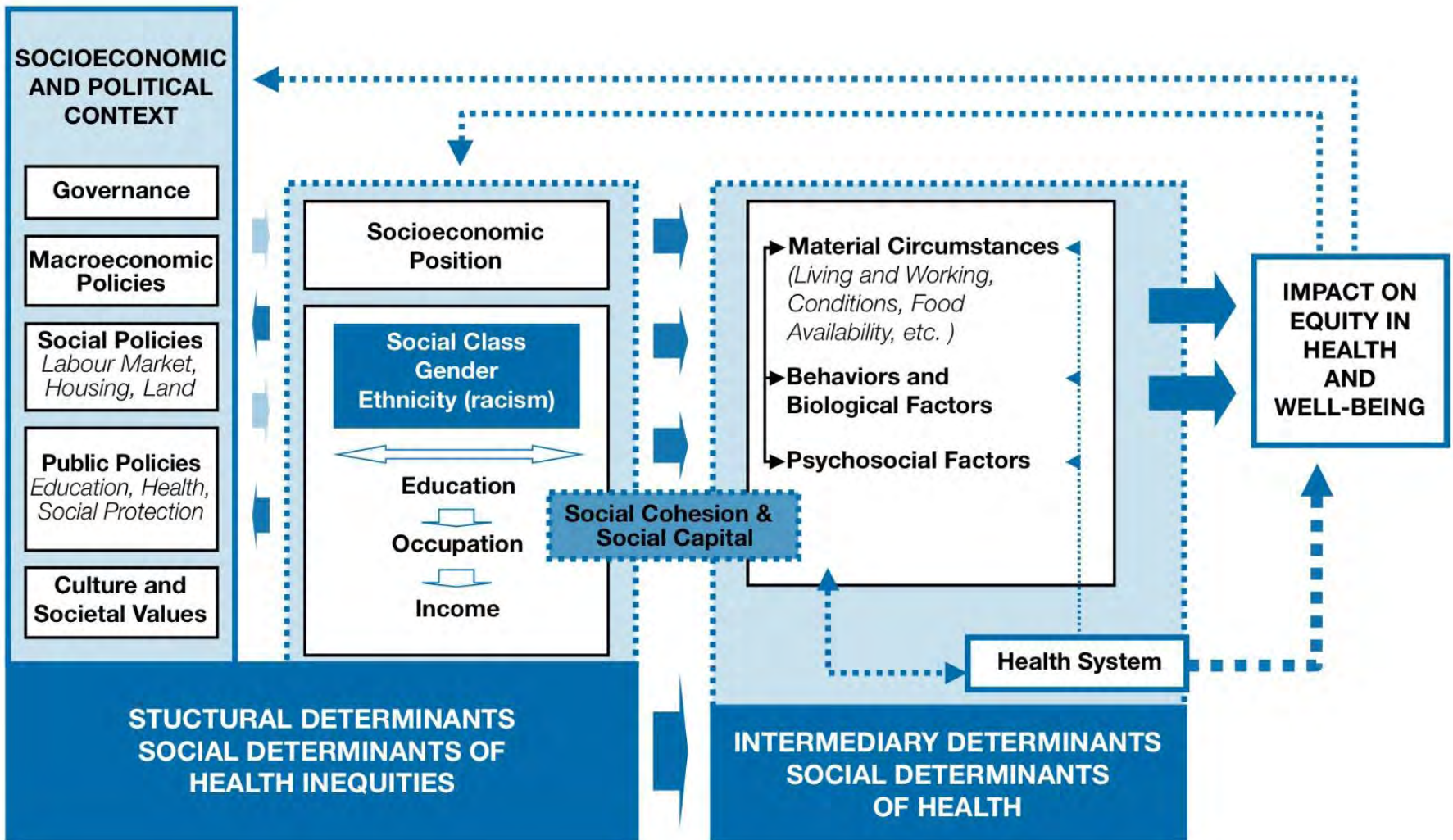
Figure 3.3 Life expectancy at birth by neighbourhood income and sex, urban Canada, 2001



(CPHO, 2008, as quoted by)

Part 1 - Exercise

- What do you think best explains health inequalities in Canada?
- If you could focus on one single thing to reduce health inequalities in Canada, what would it be?



(Solar & Irwin, 2010)

Social determinants of health inequalities

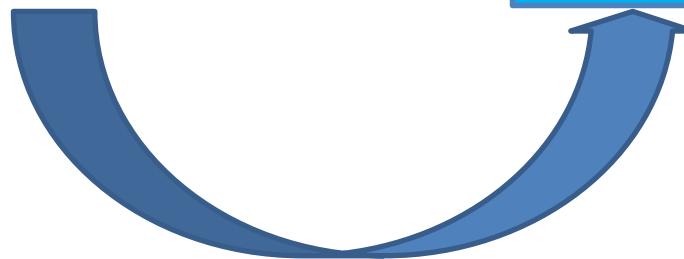
The underlying social structures and processes that systematically assign people to different social positions and distribute the social determinants of health unequally in society.

(VicHealth, 2015, p.6)

Social determinants of health

The circumstances in which people are born, grow up, live, work and age, and the systems put in place to deal with illness. These circumstances are in turn shaped by a wider set of forces: economics, social policies, and politics.

(CSDH WHO, 2016)



Reducing health inequalities

Requires a focus on:

The entire health gradient

The social determinants of health inequalities

Social determinants of health and of health inequalities

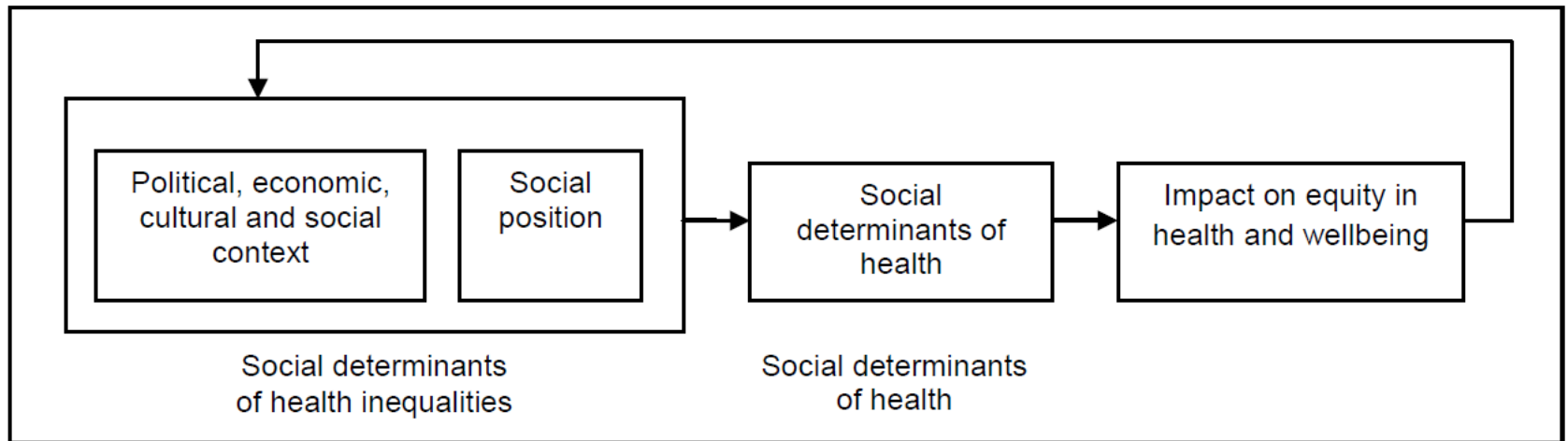


Figure 1 Social Determinants of health and of health inequalities

Source: Adapted from the conceptual framework of the CSDH WHO, 2008

8 Policy Approaches

- Political economy
- Intersectionality
- Macrosocial
- Lifecourse
- Living conditions
- Settings
- Communities
- Individuals

Key questions about policy approaches to reducing health inequalities

How is inequality conceived of?

How does the approach explain health inequalities?

What does the approach focus on?

What are the strengths and limitations of each approach?

Approaches targeting the social determinants of health inequalities (socioeconomic & cultural context, social position).

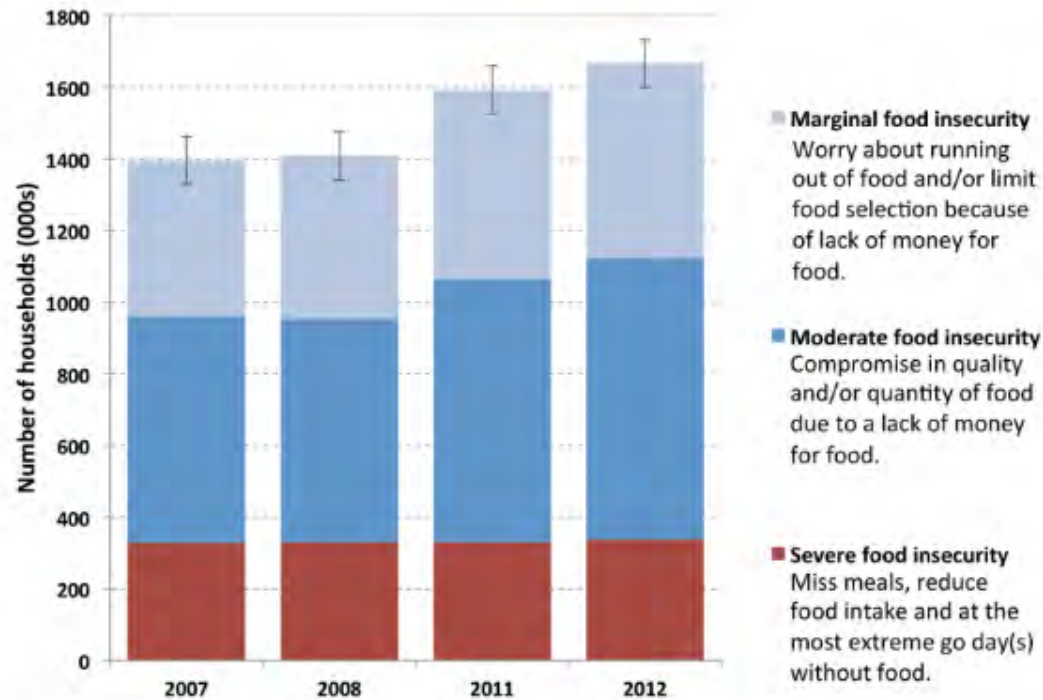
Policy approaches for acting on HI	How is inequality conceived of and from which disciplines has the approach emerged?	How does the approach explain health inequalities?	What does the approach focus on?	What are the strengths and limitations of the approach?	Examples
Political economy	<p>Inequality is the result of macro policies on wealth distribution, financial/market regulation, labour law, etc. (structural determinants and the economic organization of society).</p> <p>Inequality is a characteristic of society (not simply between individuals).</p> <p>Focus is on the distribution of power and the relationship of groups and individuals to economic modes of production.</p> <p>Social sciences, esp. political science, sociology, communication studies.</p>	<p>The structural determinants of health inequalities favour the interests of dominant groups at the expense of all others.</p> <p>Health inequalities are the inevitable outcome of social inequality that has its roots in the political and economic distribution of power.</p>	<p>Main focus is on macro or structural level policies</p> <p>Fiscal policies</p> <p>Labour market policies</p> <p>Market regulation.</p> <p>Broad policies that define the structures of governance and nature of polity.</p> <p>As political economy seeks to approach inequalities at their structural roots, it is most likely to intervene at the level of the structures which create stratification (and thus modify social position and the resulting vulnerabilities and exposures).</p>	<p>Strengths: Involves intervening at structural levels likely to have repercussions all the way through the social system.</p> <p>Limitations: Many health actors feel they are not in a position to influence root causes of inequality.</p> <p>For many, this perspective may represent an unattainable ideological shift.</p>	<p>Type of political and economic systems favoured by states.</p> <p>Types and degree of market regulation.</p>

Policy approaches for acting on HI	How is inequality conceived of and from which disciplines has the approach emerged?	How does the approach explain health inequalities?	What does the approach focus on?	What are the strengths and limitations of the approach?	Examples
<p>Life course</p>	<p>Inequality is imprinted in the life course. It is the result of interactions throughout life between individuals, their choices and their ability to act, and, social structures, the sources of inequality.</p> <p>This approach stems from the intersection of several disciplinary fields, such as sociology, psychology, demography, economics and history, and from research in the field of social epidemiology.</p>	<p>Health inequalities result from variations in the set of factors that protect health or put it at risk that one is exposed to throughout life. These risk factors vary according to social position, local and national living context, the social ties formed during the life course, the life course of linked lives and the opportunity to benefit from support resources.</p>	<p>Policies act at several levels at once and are rooted in social contexts.</p> <p>They target social circumstances and provide support during transitions and shocks throughout life (short-term immediate support and preventive policies) and foster human capital, building on pre-existing assets (long term).</p> <p>They seek to mitigate exposure and vulnerability throughout the life course.</p> <p>Because they have the potential to alter trajectories, they also have the potential to affect the social position of individuals and of those close to them (linked lives, intergenerational impact).</p>	<p>Strengths: Allows the life trajectories of different social groups to be taken into account (immigrants, Indigenous persons, etc.), as well as the role of policies in influencing these trajectories.</p> <p>Limitations: Difficult to assess the role played by policies during the life course.</p> <p>Requires <u>intersectoral</u> action throughout the life course.</p> <p>Requires participation of marginalized communities in policy making and institutional flexibility.</p>	<p>Preventive policies (short term): universal access to health care (limits the financial shock associated with a serious illness), detection of maternal depression.</p> <p>Human capital policies (long term): early childhood development, high quality daycare, more flexible organizational policies more favourable to youth employment.</p>

Policy approaches for acting on HI	How is inequality conceived of and from which disciplines has the approach emerged?	How does the approach explain health inequalities?	What does the approach focus on?	What are the strengths and limitations of the approach?	Examples
<p>Individuals</p>	<p>Health inequalities are the result of individual choices and characteristics. They are considered "functionally necessary and inevitable in a complex society that calls upon a wide variety of skills and responsibilities" [translation] (McAll, 2008, p. 94).</p> <p>These approaches emerge from fields such as social psychology or social marketing. They target individual actions and choices, in particular.</p>	<p>The poor health of some groups is exacerbated by modifiable behavioural risk factors, which stem from personality traits or from personal deficiencies (lack of knowledge or education, individual cognitive limitations, etc.).</p>	<p>Encourage individuals to make "healthy choices."</p> <p>Strengthen, support and educate the most vulnerable people to help modify their health-related behaviours and to empower them.</p> <p>These policies attempt to reduce exposure to harmful behaviours.</p>	<p>Strengths: Easy to implement and evaluate. Less costly, politically and economically.</p> <p>Limitations: Often target only disadvantaged groups.</p> <p>Can blame and stigmatize individuals and increase inequalities when they consider the individual in abstraction: do not take into account socio-cultural or economic limitations or those due to developmental influences associated with a bad start in life. Do not consider the better opportunities that the more advantaged have for adopting the measures dictated by healthy strategies.</p>	<p>Policies promoting information campaigns aimed at preventing obesity or encouraging smoking cessation. Also included here are social marketing policies aimed at modifying health behaviours.</p>

Exercise 2 – Policy Approaches

Household Food Insecurity in Canada 2012



Data Source: Statistics Canada, Canadian Community Health Survey (CCHS), 2007, 2008, 2011 and 2012.

High food prices could spell big trouble for food banks

Lower purchasing power, fewer donations and increased demand create a perfect storm

The Canadian Press | Posted: Jan 31, 2016 3:15 PM ET | Last Updated: Feb 01, 2016 11:32 AM ET

Food Insecurity Concerns Grow In Canada As Prices Rise

CP | By Aleksandra Sagan, The Canadian Press

Posted: 02/19/2016 8:09 am EST | Updated: 02/19/2016 8:59 am EST

High food prices driving some shoppers away from fruits, vegetables study says

Low-income, less-educated and young people more vulnerable to rising prices

The Canadian Press | Posted: Jun 06, 2016 7:31 AM ET | Last Updated: Jun 06, 2016 12:18 PM ET

Food price increase hurts low-income households says food bank

Exercise 2 – Policy Advice

As public health actors, you are asked to design policy alternatives to tackle food insecurity in your area. What might these look like from each of these three approaches?

- Individual approach
- Lifecourse approach
- Political economy approach

Exercise 2 – Policy Advice

- For each of the approaches, use the first three questions on the handout to guide your policy design.
- Which of the approaches do you think would have the most promising effects on reducing health inequalities?

Entry points of policy approaches

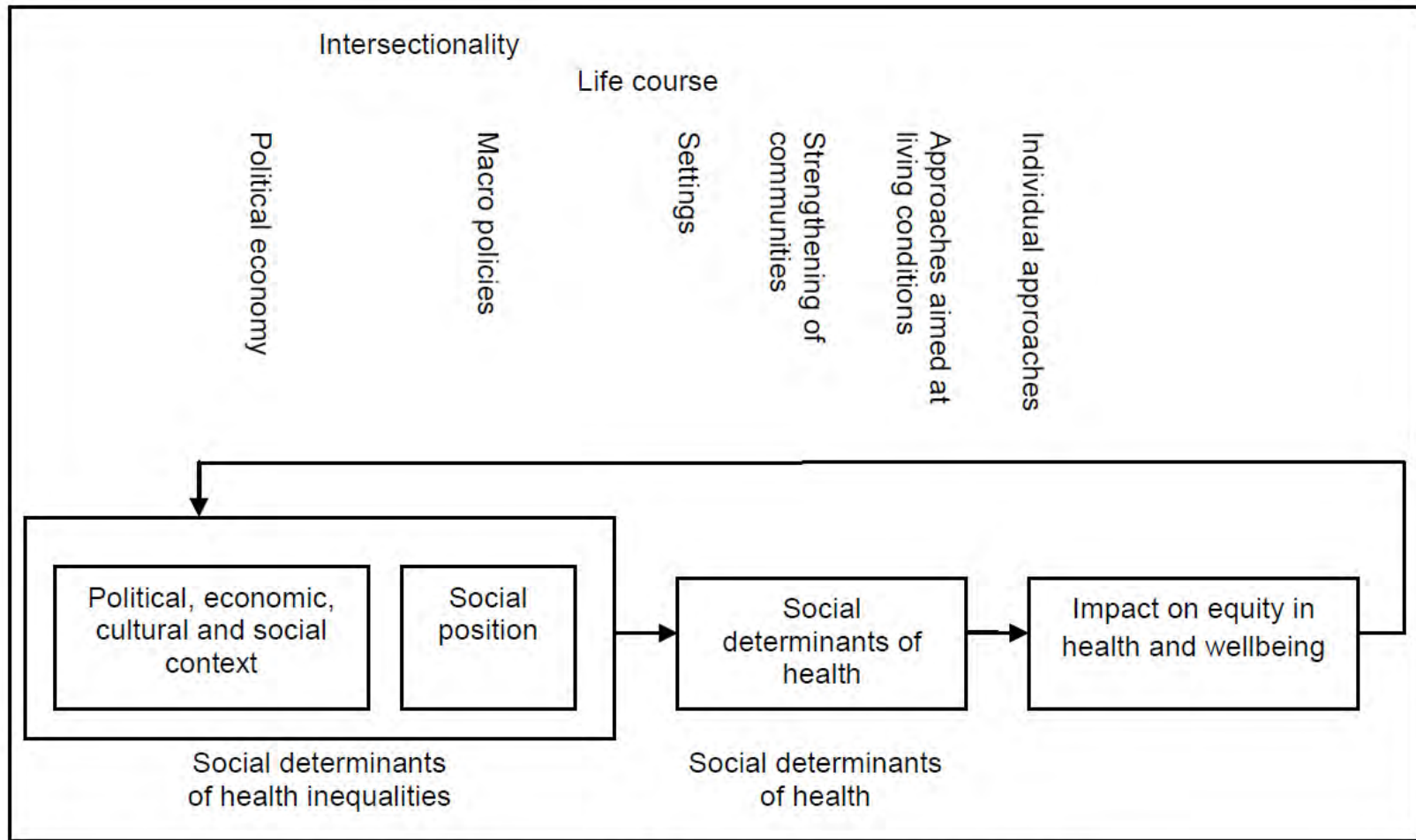


Figure 2 Entry points of the different policy approaches

Source: Adapted from the conceptual framework of the CSDH WHO, 2008

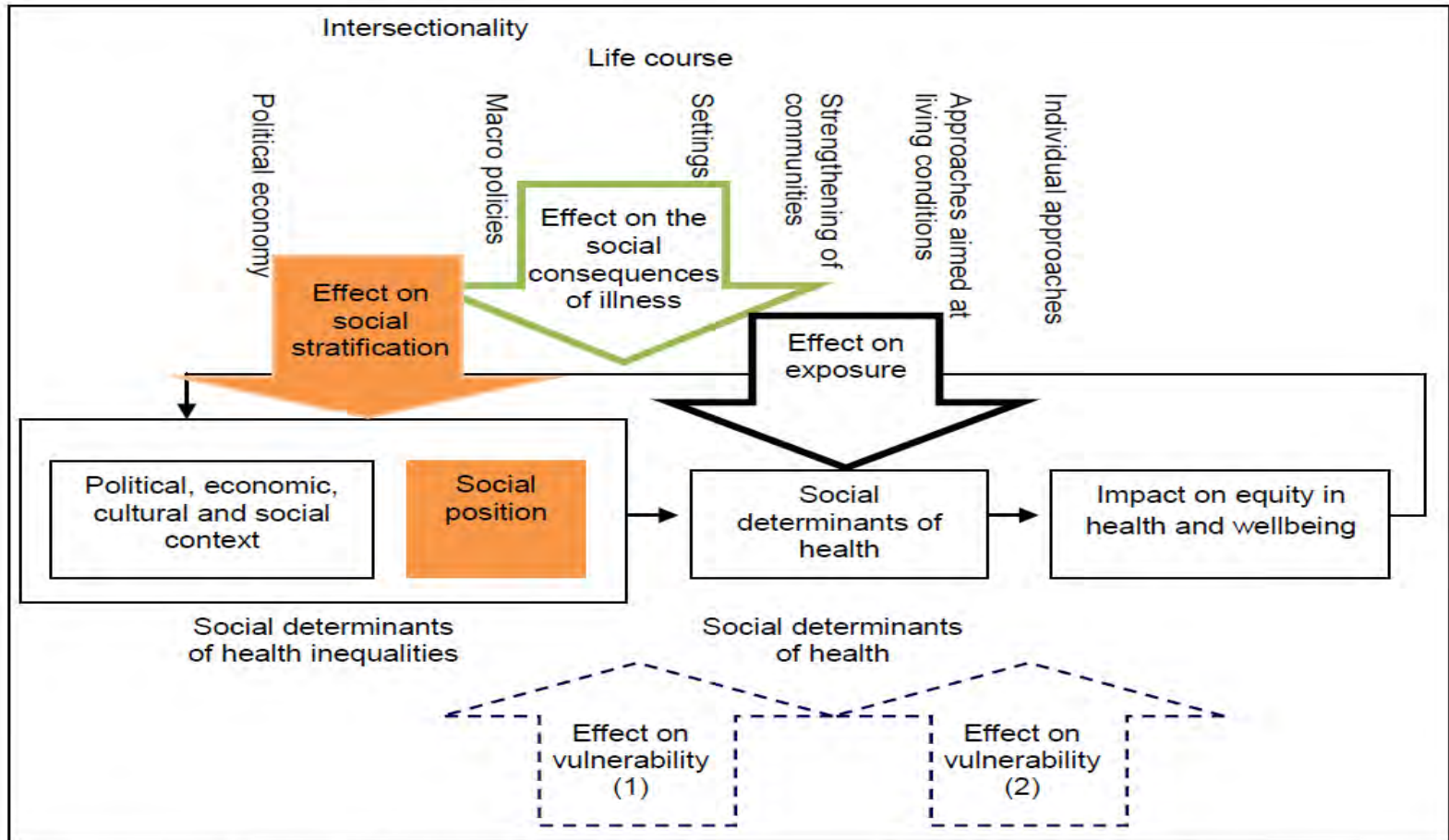


Figure 3 Potential effects of policy approaches according to their entry points

Source: Adapted from the conceptual framework of the CSDH WHO, 2008; Solar and Irwing, 2010.

Policy Approaches to Reducing Health Inequalities

March 2016

Introduction

This document is intended to enable public health actors to more easily distinguish between the most widespread policy approaches that have been proposed to reduce health inequalities. The approaches that we will discuss are:

- Political economy,
- Macro social policies,
- Intersectionality,
- Life course approach,
- Settings approach,
- Approaches that aim at living conditions,
- Approaches that target communities, and
- Approaches aimed at individuals.

Health inequalities¹ are understood to be unfair and systematic differences in health among and between social groups – differences which need to be addressed through action. These result from social and political circumstances and are therefore potentially avoidable. To address these inequalities, the relationships between the determinants of health and the health of the population have been brought to the fore so as to direct political action, which can include programmatic intervention at several levels. Despite repeated calls for more action at the structural level and despite political recognition of the importance of this type of action for reducing health inequalities (Popay, Whitehead, & Hunter,

¹ The Government of Canada defines health inequalities as “differences in health status experienced by various individuals or groups in society. These can be the result of genetic and biological factors, choices made or by chance, but often they are because of unequal access to key factors that influence health like income, education, employment and social supports” (Government of Canada, 2008, p. 5). While the term health inequalities is often used in the literature, we have used health inequalities here as in other documents by the National Collaborating Centre for Healthy Public Policy (NCCCHPP). (Note: all of our documents are produced in both French and English and there has not yet been a widely agreed-upon translation of health inequalities into French (the WHO Commission reports on the social determinants of health, for example, use health inequalities in English and *inégalités en santé* in French). For clarity and consistency, we use health inequalities in English and *inégalités de santé* in French.

2010), in reality, for various ideological, historical or practical reasons (Baum, 2011; Baum & Fisher, 2014), policies have more generally aimed at promoting healthy lifestyles and behaviour (e.g., the tax credit promoting physical activity for children in families). This tendency to recognize the need to act on the more structural determinants of health inequalities but to instead develop interventions targeting the more behavioural determinants of health is sometimes called ‘lifestyle drift.’ This has heightened the individualization of responsibility for health (Baum & Fisher, 2014; Baum, 2011) and in some cases, limited the reduction of inequalities or even, led to their intensification (Scott-Samuel & Smith, 2015). There is also a preponderance of policies targeting individuals and communities that are already disadvantaged rather than an attempt to reduce inequalities across the gradient. Such policies limit action that effectively reduces health inequalities throughout the population (Popay et al., 2010).

Our goal is to clarify how the different broad approaches to addressing inequalities are grounded theoretically and how they affect inequalities differently. To better understand the different potential impacts of these approaches, which we briefly define in the text, we shed some light on three interrelated dimensions that are often overlooked or misunderstood.

First, we discuss three ways of conceiving of and describing health inequalities: targeting disadvantaged groups, closing gaps, or addressing the gradient. Secondly we clarify the distinction between the types of determinants (of health or of health inequalities) that may be targeted by the various approaches to reducing health inequalities. Thirdly, we describe the approaches and present them in relation to the type of determinant (of health or of health inequalities) they mainly tackle. Finally, using the categories proposed by Solar and Irwin (2010), we consider the different potential effects (on social stratification, on exposure to risk factors, on the vulnerability of certain groups to particular conditions, and on the inequitable consequences

Briefing Note

For up-to-date knowledge relating to healthy public policy



Centre de collaboration nationale
sur les politiques publiques et la santé
National Collaborating Centre
for Healthy Public Policy

Institut national
de santé publique
Québec



“Using one model to explain both health and health inequalities can blur the distinction between the social factors that influence health and the social processes that determine their unequal distribution. The blurring of this distinction can be misleading for policy, and feed the policy assumption that health inequalities can be diminished by policies that focus only on the social determinants of health”

(Graham, 2004b, p. 109).

References

- Abel, T. & Frohlich, K. L. (2012). Capitals and capabilities: Linking structure and agency to reduce health inequalities. *Social Science & Medicine*, 74(2), 236-244.
- Bambra, C. (2011). Work, worklessness and the political economy of health inequalities. *Journal of Epidemiology and Community Health*, 65, 746-750.
- Baum, F. (2011). From Norm to Eric: Avoiding life style drift in Australian health policy. *Australian and New Zealand Journal of Public Health*, 35(5), 404-406.
- Baum, F. & Fisher, M. (2014). Why behavioural health promotion endures despite its failure to reduce health inequities. *Sociology of Health & Illness*, 36(2), 213-225.
- Bernard, P., Charafeddine, R., Frohlich, K. L., Daniel, M., Kestens, Y., & Potvin, L. (2007). Health inequalities and place: A theoretical conception of neighbourhood. *Social Science & Medicine* (1982), 65(9), 1839–1852.
- Bernier, J., Clavier, C., & Giasson, G. (2010). Développement social local à Montréal : approche concertée de lutte contre les inégalités. In L. Potvin, M.-J. Moquet, & C. M. Jones (Eds.), *Réduire les inégalités sociales en santé* (pp. 168-177).
- Blas, E., Gilson, L., Kelly, M. P., Labonté, R., Lapitan, J., Muntaner, C., ... Vaghri, Z. (2008). Addressing social determinants of health inequities: What can the state and civil society do? *Lancet*, 372(9650), 1684–1689. [http://doi.org/10.1016/S0140-6736\(08\)61693-1](http://doi.org/10.1016/S0140-6736(08)61693-1)
- Bourque, D., & Favreau, L. (2003). Le développement des communautés et la santé publique au Québec. *Service social*, 50(1), 295-308.
- Bowleg, L. (2012). The problem with the phrase *women and minorities*: Intersectionality – an important theoretical framework for public health. *American Journal of Public Health*. 102(7), 1267-1273.
- Carey, G. & Crammond, B. (2014). A glossary of policy frameworks: the many forms of “universalism” and policy “targeting.” *Journal of Epidemiology and Community Health*, jech–2014–204311. <http://doi.org/10.1136/jech-2014-204311>
- Cooke, M. & McWhirter, J. (2011). Public policy and Aboriginal peoples in Canada: Taking a life-course perspective. *Canadian Public Policy. Analyse De Politiques*, 37(Suppl), S15–S31.
- Dooris, M. (2009). Holistic and sustainable health improvement: The contribution of the settings-based approach to health promotion. *Perspectives in Public Health*, 129(1), 29–36.



- Esping-Anderson, G. (1990). *The three worlds of welfare capitalism*. Princeton, New Jersey: Princeton University Press.
- Frahsa, A., Rütten, A., Roeger, U., Abu-Omar, K., & Schow, D. (2014). Enabling the powerful? Participatory action research with local policymakers and professionals for physical activity promotion with women in difficult life situations. *Health Promotion International*, 29(1), 171–184.
- Frohlich, K. L. & Abel, T. (2014). Environmental justice and health practices: Understanding how health inequities arise at the local level. *Sociology of Health & Illness*, 36(2), 199-212.
- Gaudet, S., Burlone, N., & Li-Korotky, H. S. (2013). *Repenser les familles et ses transitions. Repenser les politiques publiques*. Québec : Les Presses de l'Université Laval.
- Government of Canada. (2008). *The chief public health officer's report on the state of public health in Canada, 2008*. Ottawa: Government of Canada, Ministry of Health. Retrieved from: <http://www.phac-aspc.gc.ca/cphorsphc-respcacsp/2008/fr-rc/pdf/CPHO-Report-e.pdf>
- Graham, H. (2004a). Tackling inequalities in health in England: Remedying health disadvantages, narrowing health gaps or reducing health gradients? *Journal of Social Policy*, 33(01), 115-131.
- Graham, H. (2004b). Social determinants and their unequal distribution: Clarifying policy understandings. *The Milbank Quarterly*, 82(1), 101–24.
- Graham, H. & Kelly, M. P. (2004). *Health inequalities: Concepts, frameworks and policy*. London: Health Development Agency.
- Halfon, N. & Hochstein, M. (2002). Life course health development: An integrated framework for developing health, policy, and research. *The Milbank Quarterly*, 80(3), 433-479.
- Hankivsky, O. (Ed.). (2011). *Health inequalities in Canada: Intersectional frameworks and practices*. Vancouver: UBC Press.
- Mantoura, P. & Morrison, V. (2016) Policy approaches to reducing health inequalities. Montréal, Québec: National Collaborating Centre for Healthy Public Policy.
- McAll, C. (2008). Transfert des temps de vie et « perte de la raison » : l'inégalité sociale comme rapport d'appropriation. In K. L. Frohlich, M. De Koninck, A. Demers, & P. Bernard (Eds.), *Les inégalités sociales de santé au Québec*, (pp. 87-109). Montréal: Les Presses de l'Université de Montréal.
- McDaniel, S. & Bernard, P. (2011). Life course as a policy lens: Challenges and opportunities. *Canadian Public Policy*, 37(s1), 1–13.
- McKenzie, K. (2014). *Using participatory budgeting to improve mental capital at the local level*. In British Academy for the Humanities and Social Sciences. *“IF YOU COULD DO ONE THING... Nine local actions to reduce health inequalities, (pp. 71-81)*. London: British Academy for the Humanities and Social Sciences.



- Morrison, V. (2015). *Health inequalities and intersectionality*. Montréal, Québec: National Collaborating Centre for Healthy Public Policy. Retrieved from: http://www.ncchpp.ca/141/Publications.ccnpps?id_article=1392
- Newman, L., Baum, F., Javanparast, S., O'Rourke, K., & Carlon, L. (2015). Addressing social determinants of health inequities through settings: A rapid review. *Health Promotion International*, 30(suppl. 2), ii126–43. doi:10.1093/heapro/dav054.
- Podymow, T., Turnbull, J., Coyle, D., Yetisir, E., & Wells, G. (2006). Shelter-based managed alcohol administration to chronically homeless people addicted to alcohol. *CMAJ*, 174(1), 45-49.
- Popay, J., Whitehead, M., & Hunter, D. J. (2010). Injustice is killing people on a large scale—but what is to be done about it? *Journal of Public Health*, 32(2), 148–149.
- Raphael, D. (2007) *Poverty and policy in Canada: Implications for health and quality of life*. Toronto: Canadian Scholars' Press.
- Scott-Samuel, A. & Smith, K. E. (2015). Fantasy paradigms of health inequalities: Utopian thinking? *Social Theory & Health*, 13(3-4), 418–436. <http://doi.org/10.1057/sth.2015.12>
- Solar, O. & Irwin, A. (2010). A conceptual framework for action on the social determinants of health. Social determinants of health discussion paper 2 (policy and practice). Geneva: World Health Organization. Retrieved from: http://www.who.int/sdhconference/resources/ConceptualframeworkforactiononSDH_eng.pdf
- Shareck, M., Frohlich, K. L., & Poland, B. (2013). Reducing social inequities in health through settings-related interventions: A conceptual framework. *Global Health Promotion*, 20(2), 39-52.
- University of Wisconsin-Madison Institute for Research on Poverty. (2005). Inequality in America: What role for human capital policies? *Focus*, 23(3), 1-10.
- Veenstra, G. & Burnett, P. J. (2014). A relational approach to health practices: Towards transcending the agency-structure divide. *Sociology of Health & Illness*, 36(2), 187-198.
- Vibert, S. (2007). *La communauté au miroir de l'État. La notion de communauté dans les énoncés québécois de politiques publiques en santé*. Québec, QC: Les Presses de l'Université Laval.
- Vibert, S. & Potvin, L. (2012). La communauté, une notion à redéfinir pour la santé publique. In F. Aubry & L. Potvin (Eds.). *Construire l'espace sociosanitaire. Expériences et pratiques de recherche dans la production locale de la santé*, (pp. 99-134). Montréal: Les Presses de l'Université de Montréal.



- VicHealth. (2015). About Fair Foundations and promoting health equity. Carlton, Australia: Victorian Health Promotion Foundation. Retrieved from: <https://www.vichealth.vic.gov.au/media-and-resources/publications/the-vichealth-framework-for-health-equity>
- Whitehead, M. (2007). A typology of actions to tackle social inequalities in health. *Journal of Epidemiology and Community Health*, 61(6), 473-478.
- Wilkinson, R. & Pickett, K. (2009). The spirit level: Why more equal societies almost always do better. London, England: Allen Lane.
- World Health Organization's Commission on Social Determinants of Health [CSDH WHO]. (2007). *A conceptual framework for action on the social determinants of health. Discussion paper for the Commission on Social Determinants of Health. DRAFT*. Geneva: World Health Organization. Retrieved from: http://www.who.int/social_determinants/resources/csdh_framework_action_05_07.pdf
- World Health Organization's Commission on Social Determinants of Health [CSDH WHO]. (2008). *Closing the gap in a generation: Health equity through action on the social determinants of health. Final report of the Commission on Social Determinants of Health*. Geneva: World Health Organization. Retrieved from: http://www.who.int/social_determinants/thecommission/finalreport/en/
- World Health Organization's Commission on Social Determinants of Health [CSDH WHO]. (2016). Social determinants of health: Key concepts. Consulted on February 18, 2016: http://www.who.int/social_determinants/thecommission/finalreport/key_concepts/en/



You're interested in this topic?
Visit us at www.ncchpp.ca for more
resources

Pascal.mantoura@inspq.qc.ca

Val.morrison@inspq.qc.ca



Centre de collaboration nationale
sur les politiques publiques et la santé
National Collaborating Centre
for Healthy Public Policy

*Institut national
de santé publique*

Québec 