

Equity-focused Health Impact Assessment (EfHIA)

A tool to assist local decision-makers in the City of Greater Sudbury

Stephanie Lefebvre, Manager, Health Equity
Sudbury & District Health Unit

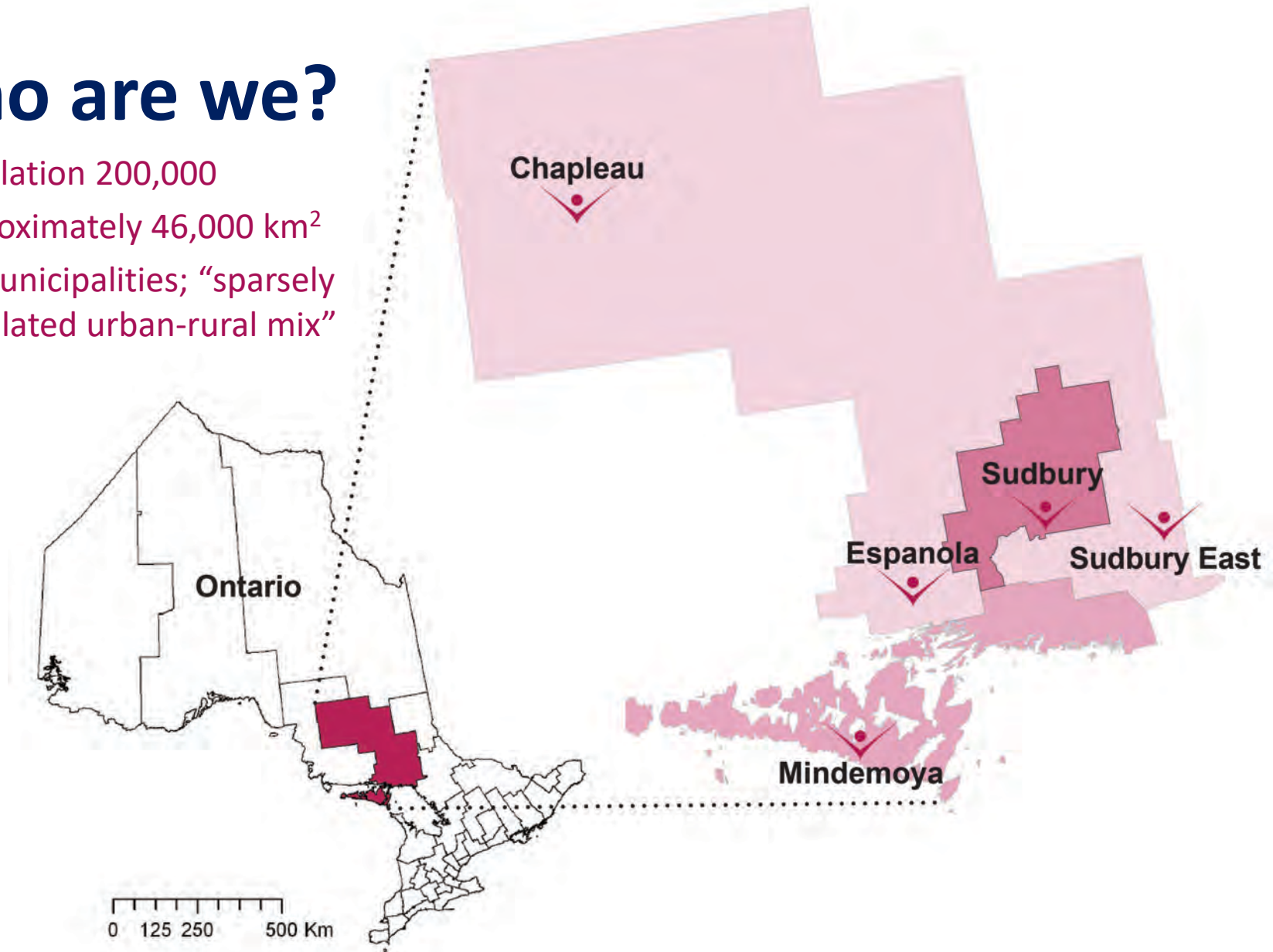
12th Health Impact Assessment International Conference
August 29, 2012

I will share . . .

- A bit about the Sudbury & District Health Unit
- Our experience with Health Impact Assessment
 - Building our own understanding and capacity
 - Sharing it with our community partners
 - Building the support of our Board of Health and municipalities
- Lessons learned and Recommendations for others

Who are we?

- Population 200,000
- Approximately 46,000 km²
- 19 municipalities; “sparsely populated urban-rural mix”



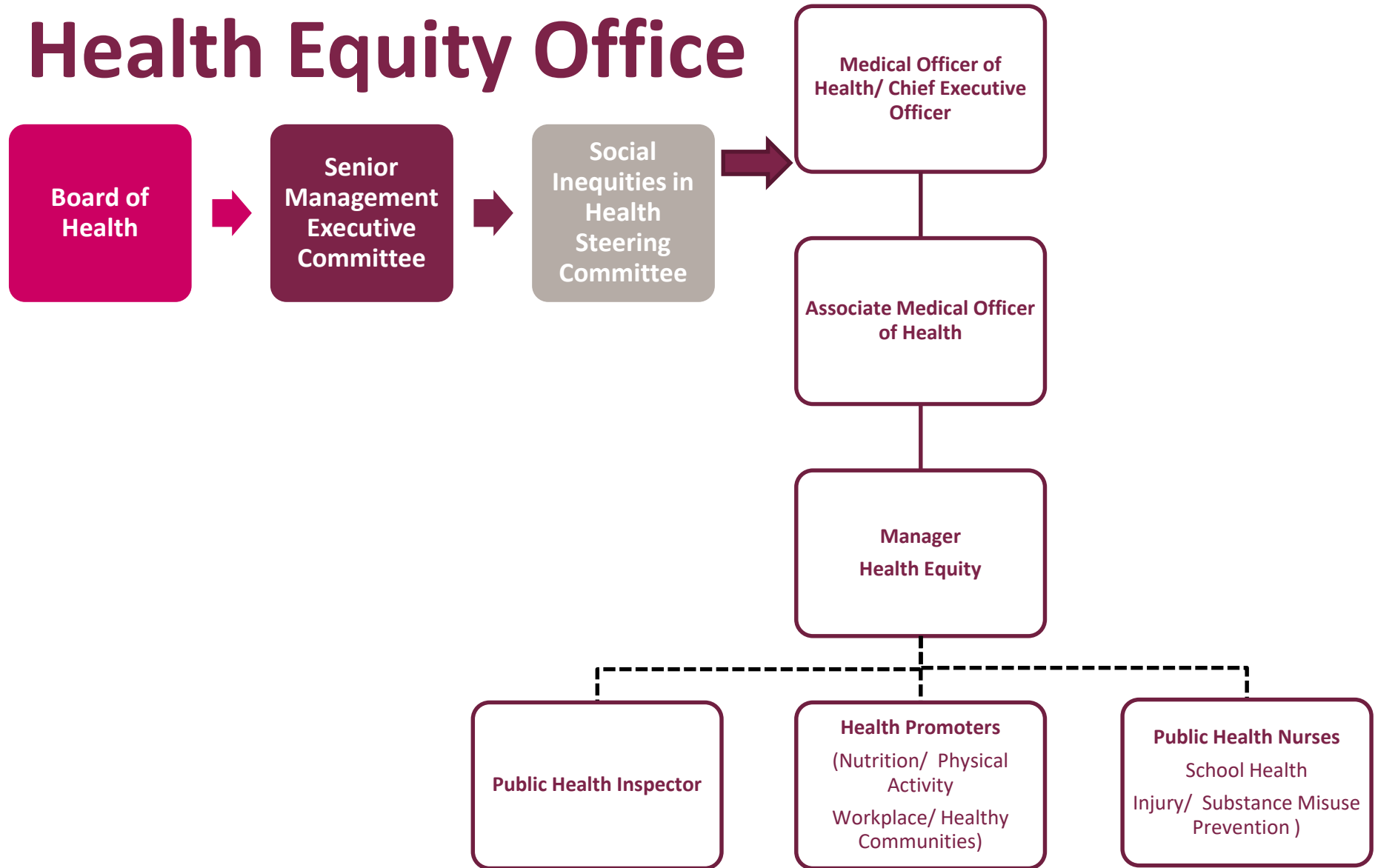
Our Goal:

Health Equity Vision 2020

The Sudbury & District Health Unit will work to improve the overall health and health equity of area citizens so that:

- systemic and avoidable health disparities are steadily reduced and the gap in health between the best and worst off is narrowed;
- all citizens have equal opportunities for good health and well-being; and
- all citizens have equitable access to a full range of high quality public health programs and services.

Health Equity Office



Why Health Impact Assessment?

10 Promising Local Public Health Practices to Reduce Social Inequities in Health



Lifestyle-focused public health actions

Policy-focused public health actions

1. Targeting with Universalism

4. Social Marketing

2. Intersectoral Action

5. Early Child Development

3. Equity Focused Health Impact Assessment

6. Purposeful Reporting

7. Competencies and Organizational Standards

8. Contribution to Evidence Base

9. Community Engagement

10. Health Equity Target Setting

Sutcliffe, Laclé, Snelling, EXTRA Fellowship Final Project Report. 2010

Canadian Health Services Research Foundation, Executive Training for Research Application

EfHIA Community Pilots

Supported by the City of Greater Sudbury
Healthy Communities Cabinet



Healthy Community Initiative
City of Greater Sudbury

What does Nadia need for her health?



WATCH THE VIDEO!

*"Let's Start a Conversation About Health...
and Not Talk About Health Care at All"*

www.sdhu.com | www.youtube.com/thehealthunit

For more information, email startaconversation@sdhu.com or call 705.522.9200, ext. 515.
© Sudbury & District Health Unit, 2011

Make it a
**Healthy
Day!**

Sudbury & District Health Unit
Service de santé publique de Sudbury et du district

Community Door Working Group

The proposal:

A “shared space concept” in the City of Greater Sudbury. This model of service delivery would bring together diverse non-profit sector organizations into one location



Change starts here.

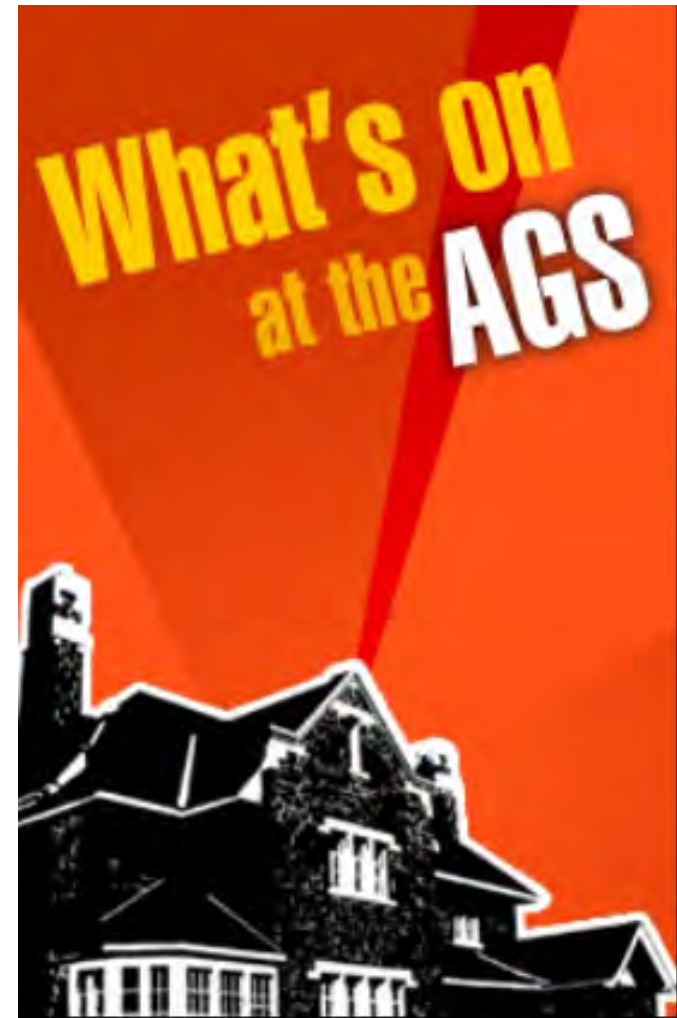


**United Way
Centraide**
Sudbury and/et
Nipissing Districts

A “Rapid HIA” with the Art Gallery of Sudbury

The proposal:

A new, purpose-built
facility for the arts in
Northern Ontario.



Factors influencing community partner interest in HIA

HIA potentially:

- Improves agency understanding of health impacts
- Helps to justify agency funding decisions
- Lends support to proposals – once potential negative impacts are mitigated
- Enables agencies to enhance proposals to offer better services

Lessons learned

Challenges experienced along the way:

- Limited capacity and human resources of partner agencies
- Lack of detail provided in original project proposal
- Limited stakeholder understanding of EfHIA goals and objectives
 - Initial stakeholder focus on individual health as opposed to broader community health
- Our own tendency to broaden the scope of the EfHIA throughout assessment phase

Initial Pilot EfHIA Outcomes

Sudbury EfHIA projects have:

- Highlighted potential unintended outcomes and impacts
- Broadened community understanding of the factors that contribute to health
- Convened diverse stakeholders around common interests

City of Greater Sudbury Strategic Plan 2012-2014

Priority #5: Healthy Community

"Incorporate a health impact assessment tool or healthy community lens into City decision making for large scale projects and initiatives"

Factors influencing City of Greater Sudbury interest in HIA

- Years of public health / municipal partnerships that have incorporated a health equity lens
- Municipal commitment to the “Healthy Communities” model and mandate
- HIA seen as a tool to contribute to “the cultural shift toward a broader and more holistic approach to planning and service delivery ”

Potential Roles for Public Health



Sudbury & District

Health Unit

Service de
santé publique

EfHIA: *The Motion*

THEREFORE BE IT RESOLVED THAT the Sudbury & District Board of Health *encourage local municipalities to consider Equity-focused Health Impact Assessment as a tool to support local decision-making; and*

FURTHER THAT the Sudbury & District Board of Health *direct staff to continue their efforts to promote Equity-focused Health Impact Assessment as a tool to support local decision-making within Sudbury & District municipalities and across community sectors*

Promote and build capacity to conduct EfHIA among community partners

- Link partners to EfHIA tools and resources
- Connect community stakeholders to participate in EfHIA screening/scoping
- Facilitate discussion and dialogue
- Assist with the review of evidence and development of recommendations

Recommendations

- Build decision-maker interest, understanding and support over time
- Understand partner motivation and capacity
- Present EfHIA as a tool to address existing and concrete issues (health inequities)
- Highlight potential of EfHIA to further support (as well as challenge) policies and proposals

Thank you



This presentation was prepared by staff at the Sudbury & District Health Unit.

This resource may be reproduced, for educational purposes, on the condition that full credit is given to the Sudbury & District Health Unit.

This resource may not be reproduced or used for revenue generation purposes.

© Sudbury & District Health Unit, 2012